

SPR

*System
Prevention
Rhynchophorus
Ferrugineus*



The “Red Palm Weevil”
...An enemy to defeat
with **prevention!**



The phytosanitary products are authorized by the Italian Health Ministry

Product	Toxo class	Active substance
Adina 10	Xi	Azadiractina A+B
Diractin	Xi	Azadiractina A+B
Eagle	NC	Cipermetrina
Kohinor plus palme	NC	Imidacloprid+Ciflutrin
Meteor	NC	Deltametrina
Metidane 22	Xi	Clorpirifos-metile
Neemazal-T/S	NC	Azadiractina A
Oikos 25 plus	Xi	Azadiractina A+B
Oikos green	Xi	Azadiractina A+B
Pyrinex palme	NC	Clorpirifos+Deltametrina
Reldan 22	Xi	Clorpirifos-metile
Rogor L 20	Xi	Dimetoato

Product	Toxo class	Active substance
*Dantop 50 WG	Xn	Clothianidin
*Piridane 40,8 E.C.	Xn	Clorpirifos

**Not to use in urban environment*



► Phoenix with top at risk (right),
Healthy plant (left).



Phoenix irretrievably at risk ◀

The “Red Palm Weevil” (Rhynchophorus Ferrugineus)

Presently it is not easy to be protected by the “Red Palm Weevil” as there is no specific defense technique commercially available. An element of the Red Palm Weevil spreading is due to the difficulty to determine on time the infested plants.

The typical symptom that indicates the presence of the Rhynchophorus is nearly always too late, when the larve has seriously damaged the meristem center, the heart of the palm tree!

The spreading occurs through the eggs that the adults deposit on the palms. The just born larvae, begins to perforate the trunk and penetrate inside

devouring it. Bear in mind that pruned plants or wounded plants, particularly attract the parasite. The biological cycle prolongs approximately four months and concludes with the metamorphosis, which gives a body to a new adult in a position to reproduce and to fly on other near palms. Therefore the only feasible defense against the “RPW” is that of a prevention with system SPR. The treatment consists in a repulsive strategy, that is to provoke around the palm a condition for which the pest, in case it reaches in the vicinities, will tend to go away.



SPR Prevention System Rhynchophorus Ferrugineus

Product Characteristics

The SPR system is produced by EPOCA SpA, it is composed of a 10 mt tube PE Ø 2,1 mm inserted in a curved spike with adjustable nozzle. Including also the spray connector for SPR sprayer, sold separately.

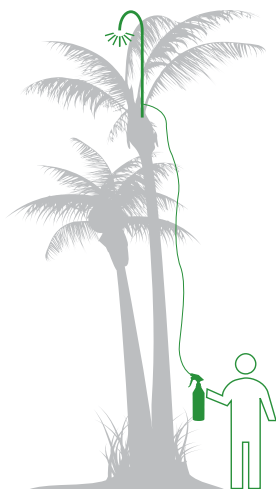
How does it work?

Once the curved spike is fixed on the top of the palm tree (permanent structure) screw the spray connector to the SPR sprayer. With about ten primes the product will reach the spray nozzle and with

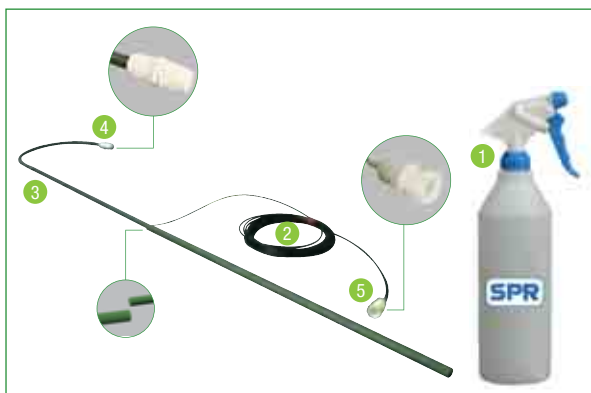
further more 10 primes the product will be sprayed on the top of the palm tree, in particular on the meristem. The amount of distributed product is 2,2 ml per prime.

At the end of the process detach the sprayer allowing the residual liquid to drain from the tube to avoid the formation of algae that can obstruct the system.

N.B.: The treatment has a good result in absence of rain. In case of rain repeat the treatment.



SPR System function



1. Professional sprayer SPR (sold separately)
2. 10 mt Tube PE
3. Curved Spike materiale
4. Spray nozzle
5. Spray connector

Always innovating!
www.epocaspa.com



Epoca SpA

Via S. Andrea, 24

I 36061 Bassano del Grappa VI (z.i. S. Lazzaro)

Tel. +39 0424 884911

Fax +39 0424 567246

www.epocaspa.com